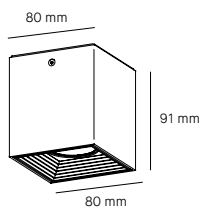
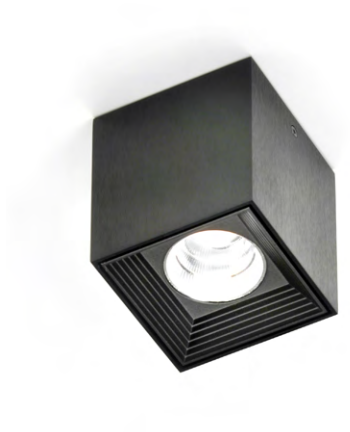


Dau Spot




Milan



Dau 80 CC C.

Ø80 x 80 mm | H. 91 mm

1 x COB LED 

956 lumens | 2.700K | CRI 90

3-step MacAdam

Driver included

Dimmable leading and trailing edge

10-100%

PF. 0,90

Ripple < 10%

Class I: Basic insulation

Finishes

- 6877 ● Brushed aluminium
- 6878 ● Matt white lacquering (RAL 9016)
- 6879 ● Black satin aluminium

DOWNLOADS

Catalogue

[6877/6878/6879](#)

3D Files

[6877](#)

[6878](#)

[6879](#)

3D Max Files

[6877](#)

[6878](#)

[6879](#)

Assembly instructions

[6877/6878/6879](#)

Photometric curve

[6877/6878/6879](#)

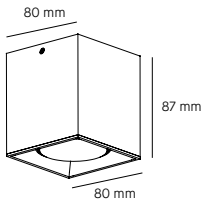
Economic efficiency index

[6877/6878/6879](#)

Pure geometry.

Dimmable version in DALI system or 1-10 V on request. Extruded aluminium outer body. Finishes in anodised brushed aluminium, white lacquer (RAL 9016) and satin brushed aluminium in black. Injected aluminium


LED support and heat sink. Finishes in mat metallic grey (similar to RAL 9006), white lacquer (RAL 9016) and satin black (RAL 9005). Inner bodies: injected aluminium base mount.



Dau 80 GU10 C.


Ø80 x 80 mm | H. 87 mm

1 x GU10 Bulb retrofit

Led 8W Ø63mm 

Code 2053 | CRI 80

720 lumens | 2.700K

Led 8W Ø50mm 

Code 2123 | CRI 80

700 lumens | 2.700K

Dimmable

Class I: Basic insulation

Finishes

- 6023 ● Brushed aluminium
- 3118 ● Matt white lacquering (RAL 9016)
- 6118 ● Black satin aluminium

DOWNLOADS

Catalogue

[6023/3118/6118](#)

3D Files

[6023](#)

[3118](#)

[6118](#)

3D Max Files

[6023](#)

[3118](#)

[6118](#)

Assembly instructions

[6023/3118/6118](#)

Photometric curve

[6023/3118/6118](#)

Economic efficiency index

[6023/3118/6118](#)

Dimmable version in DALI system or 1-10 V on request. Extruded aluminium outer body. Finishes in anodised brushed aluminium, white lacquer

(RAL 9016) and satin brushed aluminium in black. Injected aluminium LED support and heat sink. Finishes in mat metallic grey (similar to RAL 9006),

white lacquer (RAL 9016) and satin black (RAL 9005). Inner bodies: injected aluminium base mount.