

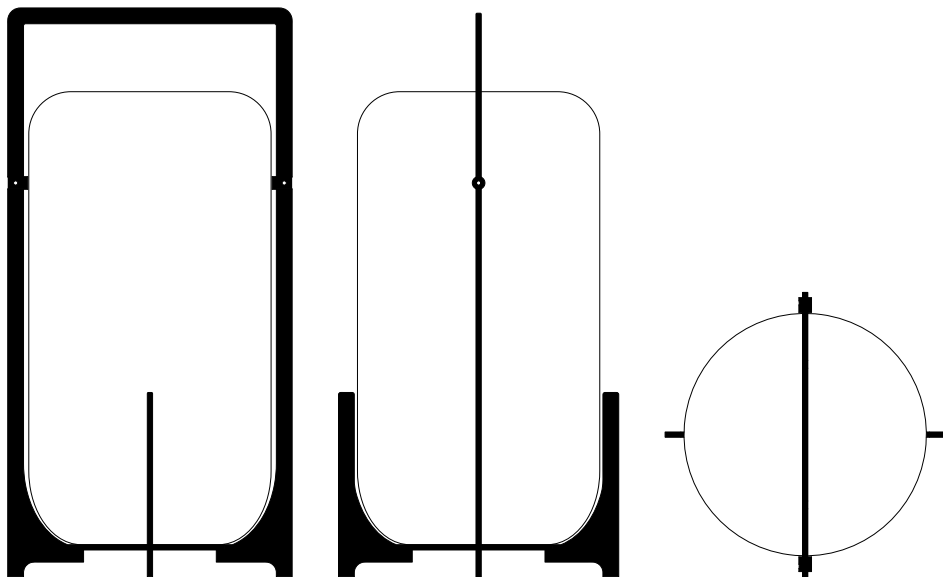
# WARLI

# TWILIGHT

PAOLO ZANI



Warli's first luminous object, an autonomous and wireless LED lantern. It is a deliberately precious but essential light; the shade is in opal blown glass finely engraved by hand. The structure is in stainless steel, perfect for outdoor use and highly resistant to atmospheric agents. It will turn off at dawn.



## TWILIGHT Outdoor lantern L

Dimensions : 27 x h. 54 cm.

Glass : Ø 23 x h. 43 cm.

Light :

led 3000 K, 3 W, battery 4000 mA

charger included in the package,

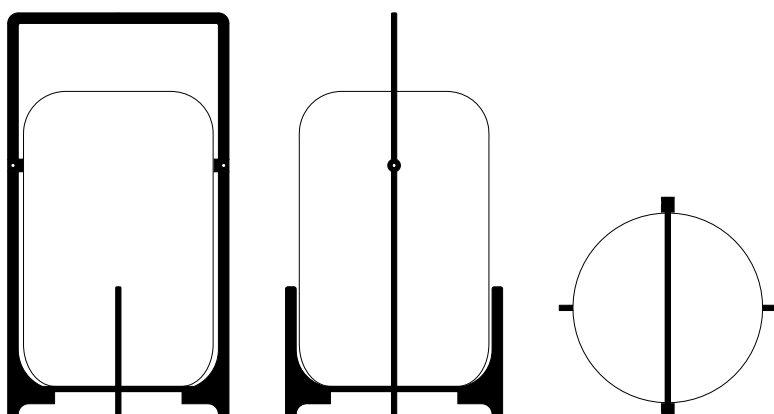
two levels of lighting intensity

charging time: 5-6 hrs.

working time: 6 hrs.

IP 44

input : AC 100-240V 50/60 hz



## TWILIGHT Outdoor lantern M

Dimensions : 21 x h. 38 cm.

Glass : Ø 18 x h. 28 cm.

Light :

led 3000 K, 3 W, battery 4000 mA

charger included in the package,

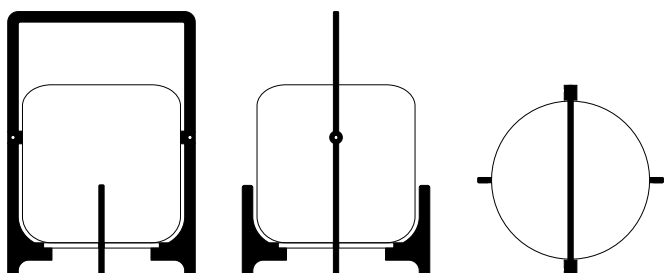
two levels of lighting intensity

charging time: 5-6 hrs.

working time: 6 hrs.

IP 44

input : AC 100-240V 50/60 hz



## TWILIGHT Outdoor lantern S

Dimensions : 18 x h. 25 cm.

Glass : Ø 15 x h.15 cm.

Light :

led 3000 K, 3 W, battery 4000 mA

charger included in the package,

two levels of lighting intensity

charging time: 5-6 hrs.

working time: 6 hrs.

IP 44

input : AC 100-240V 50/60 hz