



# Capsule

**CAMERON  
DESIGN  
HOUSE**

A collaboration between innovative design duo 2LG and Cameron Design House. The challenge was to take the classic strip light and re-imagine it in a contemporary context. Standard arrangement: 150x90cm and 100x90. Bespoke options available. Integral decorative lighting.

**Hanging** - Available in 100-300mm drop height on 3mm rods.

**Light Source** - Glass diffusers.

LED lights, CRI>95, ~ 50K hours life.

LED standard colour temperature options: 2.7k and 3k (other temperatures available on request)

Power to fixtures: Via suspension rods.

Indicative Lumen level available on request.

**LED Driver** - Triac Dimmable (5%-100%) as standard, all dimming protocols available on request.

Wattage dependent on sizing. Class II driver as standard.

Output Voltage: 24V.

Input Voltage: 110V-230V-277V, to be specified.

Bespoke options and design service available.

All fittings and installation instructions are provided.

## Maintenance

Clean with smooth and dry cloth. Do not use any ammonia, solvents or abrasives. No user serviceable components. Refer to instruction manual for detailed cleaning instructions.

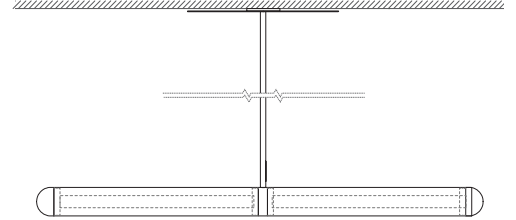
Contact CDH for further technical details/downloads:

[technical@camerondesignhouse.com](mailto:technical@camerondesignhouse.com)

<https://camerondesignhouse.com>

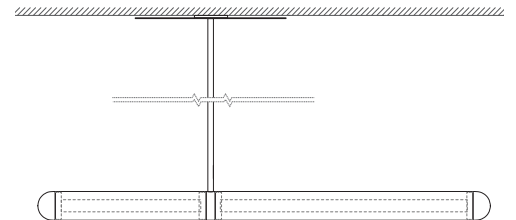
## Keski

Standard dimensions:  
150x90cm  
59"x36"



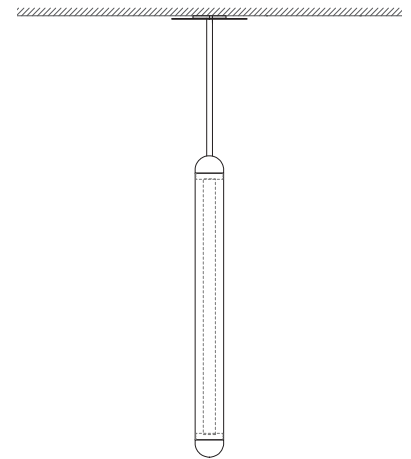
## Saldo

Standard dimensions:  
150x90cm  
59"x36"



## Alas

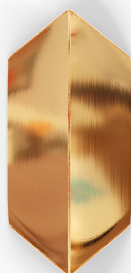
Standard dimensions:  
100x90cm  
40"x36"



**Finishes and Materials Options** - Size limitation for some finishes, contact CDH for a formal quotation.

Brushed Metal

Brass



Tropical Green



Flamingo Pink



Electric Blue



Full range of Ral Colours and metal finish available